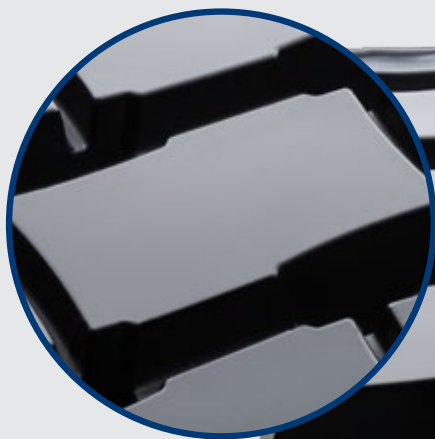


Launching of VT820

Expanding its line of precured treads, Vipal Rubber is launching the **VT820: a new traction design** recommended for use on paved and unpaved roads, for vehicles that travel at low speed. Designed for excellent performance in extreme driving conditions, as well as in mud and snow.

See the main advantages of the new design:



Transversal blocks that allows excellent traction power.








Grooves designed to enable self-cleaning of the tread.



Reinforced middle section to help preserving the case and contribute to better performance.

VT820 means:

| | |
|------------|---|
| V | Vipal tread |
| T | Recommended for use in drive axles |
| 820 | Hundred 800 represent treads for radial tires use in off-road streets |

| | | | | |
|------------------------------|---|-------------------|--|--------------|
| Indicated application |  | Off-road | | |
| Optional Application |  | Regional |  | Mixed |
| Construction |  | Radial |  | Mud and Snow |
| Axles |  | Drive | | |
| Vehicles |  | Medium duty truck | | |

Technical information:

| Code | Description | N# |  | |  | |  | |  Recommended tire |
|--------|-------------|------|---|-------|---|---------|---|--------|---|
| | | | mm | in | kg / m | lb / ft | mm | in | |
| 448035 | VT820 | 10.5 | 240 | 9 1/2 | 7,53 | 5.06 | 30 | 1 6/32 | 295 11.00 |