

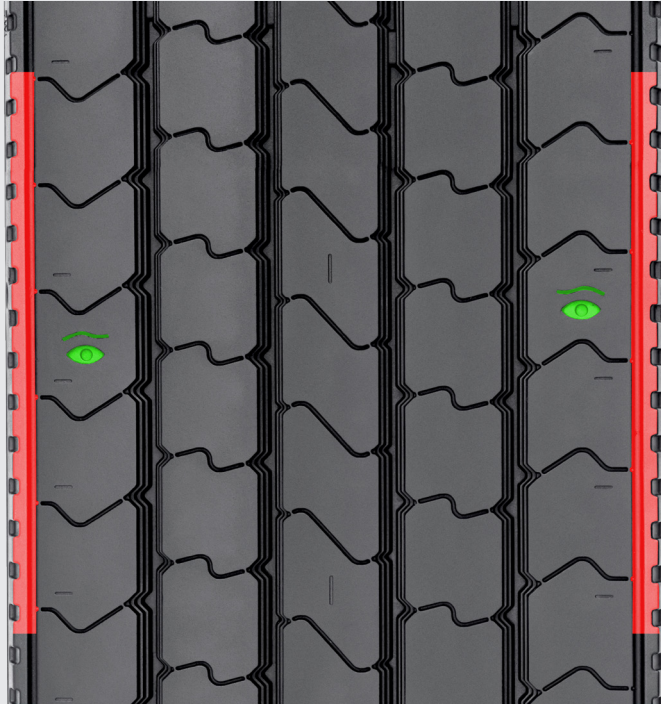
RZL125 Launch

Ruzi announces the launch of its new tread. The **RZL125**, indicated for trailers and semi-trailers mounted on trailer axles, **offers excellent abrasion wear resistance**. Because it's a **lightweight tread**, it helps increase the tyre's retreadability index, also ensuring low heat generation, which provides less casing fatigue. In addition, due to its wide contact area with the ground, **the projected travel distance is increased**.

RZL125 means:

RZ	Ruzi Tread
L	Indicated for use on trailer axles
125	100 and 200 in the hundreds position represent treads for use on highways and paved streets, on radial tires

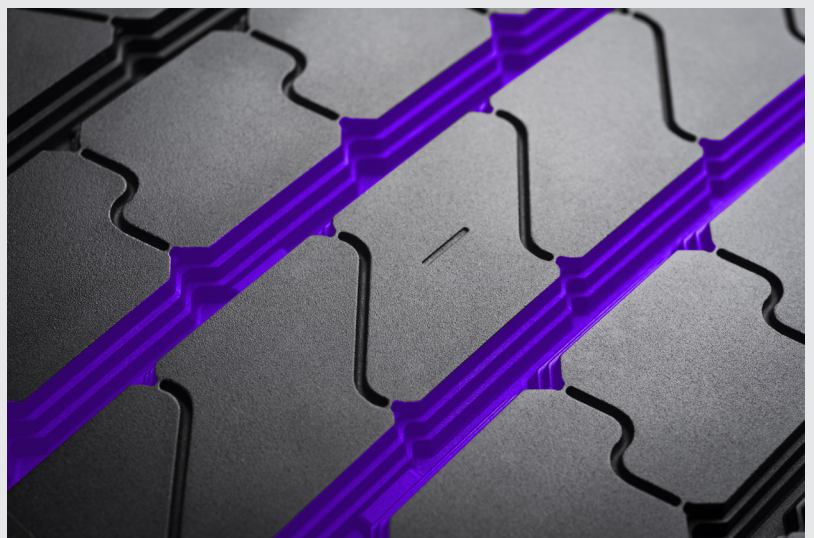




Shoulder design: Designed to minimize the effects of side drag in maneuvering operations and reduce uneven tread wear.

Eye Control: Exclusive suggestive wear indicator.

Groove shaping: Geometry designed to keep rocks and other objects from getting embedded in the tread.



Recommended application



Highway

Optional application



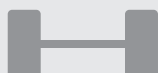
Regional

Construction



Radial

Axles



Trailer

Vehicles



Trailer and Semi-trailer

Technical information:

Code	Description	N#							 Recommended tyre
			mm	in	kg / m	lb / ft	mm	in	
N404344	RZL125	8.0	210	8 1/4	2,56	1.72	10	12/32	9.00 10.00
N404345	RZL125	9.0	220	8 5/8	2,70	1.81	10	12/32	9.00 10.00 11.00
N404346	RZL125	10.0	230	9	2,83	1.90	10	12/32	10.00 11.00 275 295

The RZL125 tread is available for sale in all countries except Brazil.